

# The AllVault™

MAXIMUM SECURITY ENCLOSURE



**Allvault™ is a world first. The high security outdoor box is made to offer exceptional protection from dust, water and unwanted personnel.**

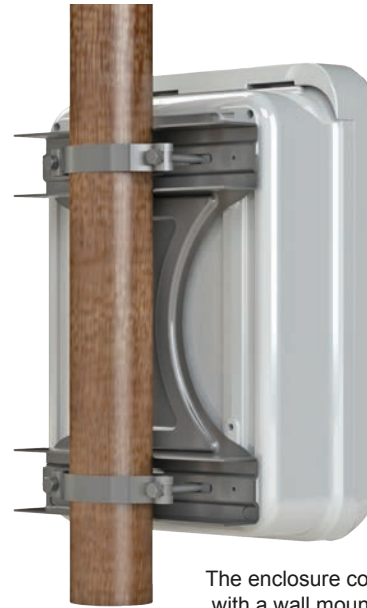


## Door Stay



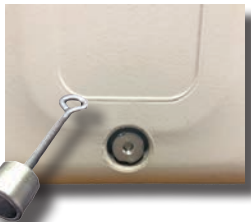
Compression latch to keep the lid up automatically

## Stainless steel mounting bracket



The enclosure comes standard with a wall mounting bracket. Pole mounting bracket can be ordered separately.

### Mechanical standard lock



Coded Nuts (1000 variations) with magnetic caps works like coded wheel mag nuts

### Internal Hinges



Cannot be compromised from outside, increasing security



Part Number

Description

H  
(mm)

W  
(mm)

D  
(mm)

040-906

AllVault empty with mechanical nut (IP 66)

581

403

201

018-042

AllVault magnetic key

040-950

AllVault pole bracket set



Signal interference



Access control



Flammability



Vandalism



Human contact risk/  
Shock hazard



IP Level  
(Water & Dust)



UV Resilience and  
weatherability

**Material**  
SMC

**Operating Temperature**  
-50°C to +200°C

**Glow wire**  
UL94 V0  
960°C

**Expected UV Life**  
UV 25 yrs

